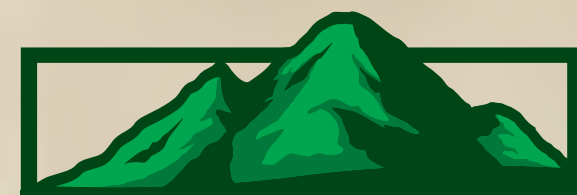




Modern Rental Apartments in a Historic Gem
LOCATED IN THE HEART OF PITTSFIELD, MA



Terrace 592

APARTMENTS

www.Terrace592.com

592 North Street, Pittsfield, MA 01201

CONVENIENT LOCATION

Apartments at Terrace 592 feature spacious kitchens with brand-new Energy Star appliances including brand new Energy Star microwaves, dishwashers, ranges and refrigerators. The bedrooms are so spacious, with large closets for your pleasure. Living spaces have stylish decorator hard surface flooring and newly tiled bathrooms. With individual resident-controlled Energy Star heating and air conditioning, you will always be comfortable. Terrace 592 is a place you will be proud to call home.



THE LIFESTYLE YOU DESERVE

At Terrace 592, our Energy Star eco-friendly state of the art historically renovated apartments allow for a comfortable, yet stylish lifestyle in a convenient location. Each newly constructed, airy apartment will allow you pride and comfort in your new home, with a modern touch, but still retaining some of the historic character. Additionally, the building also has maintenance staff on call for your needs. Terrace 592 gives you the worry-free lifestyle you have been searching for – at rents that make sense.



APARTMENT FEATURES

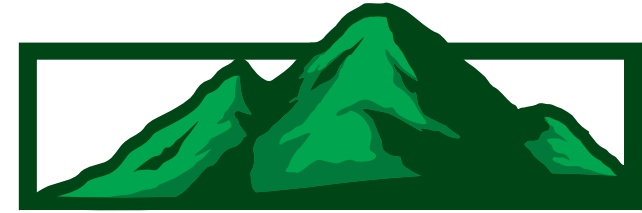
Terrace 592 is centrally located in the heart of Pittsfield along North Street in downtown Pittsfield. The building is easily accessible for cars and pedestrians. The public bus stop access is steps from the building entrance – taking you anywhere you want to go. The building is a quick walk to the center of Pittsfield, which offers both shopping and dining to residents. Terrace 592 combines superior rental apartments and easy access, with so many local amenities right at your building's doorstep



Fantastic Apartments at Below Market Rents

1 Bedroom \$1,088*

2 Bedroom \$1,317*



Terrace 592

A P A R T M E N T S

Qualification Guidelines

Applicable Maximum Incomes

Project financing requires the following maximum incomes, which apply by household size:

Household Size	Income Limit
1 Person	\$47,280
2 Persons	\$54,000
3 Persons	\$60,780
4 Persons	\$67,500
5 Persons	\$72,900

* Tenant pays heat, hot water, cooking electric, apartment electric and A/C.

** Certain apartments for eligible special needs households are subject to different income limits.

These incomes are calculated just prior to signing a lease on the apartment. If the income rises or falls after the time of income qualification, this will not affect income qualification. However, this assumes that the income qualification was correct and true at the time of the qualification.



For These Apartments

Fill out application and mail to:

Terrace 592

c/o Hearthway Inc.

P.O. Box 1180,

Pittsfield, MA 01202-1180

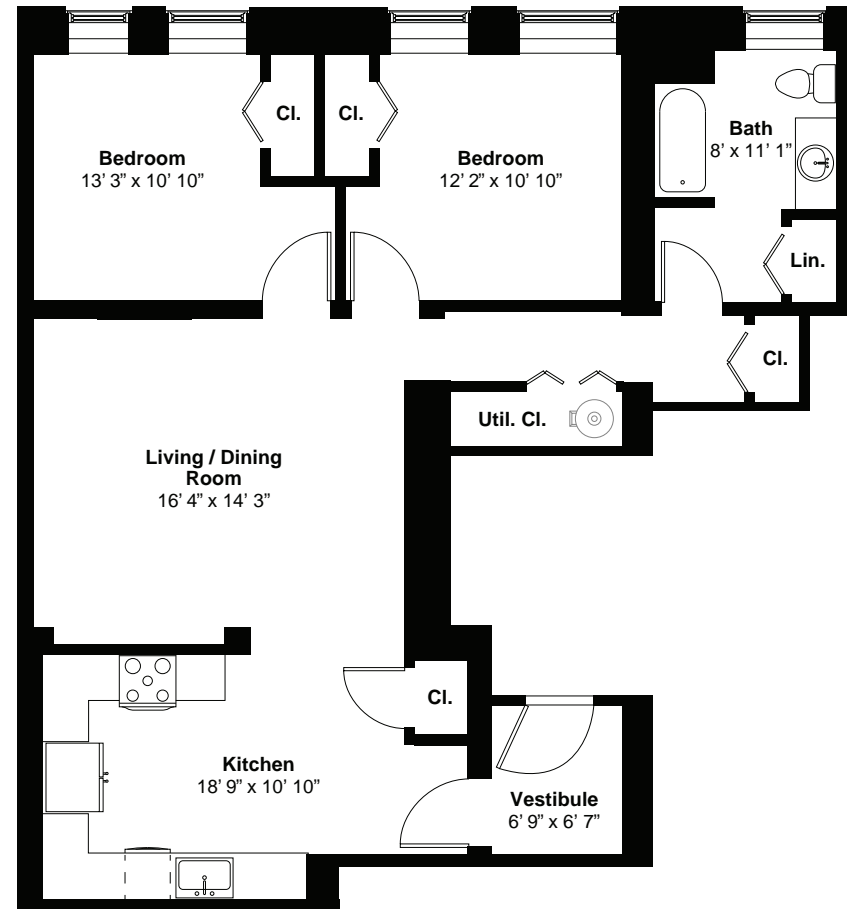
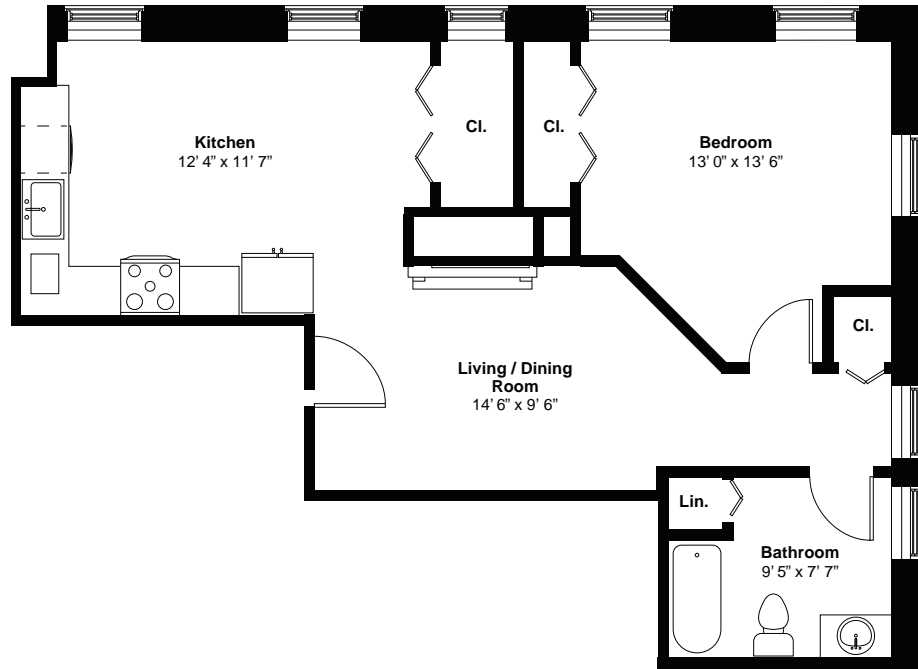
Or email the completed and signed application to

rentals@Terrace592.com

Or Fax the signed application to **413-403-2710**

APPROX. 861 SF- 2 BEDROOM

APPROX. 667 SF- 1 BEDROOM



Terrace 592

A P A R T M E N T S

www.Terrace592.com

These are a few examples of the apartment layouts available. Apartment layout, features and square footages will vary depending on location in the building and are subject to change.

These are artist's renderings only and all dimensions are approximate. Not fully to scale.

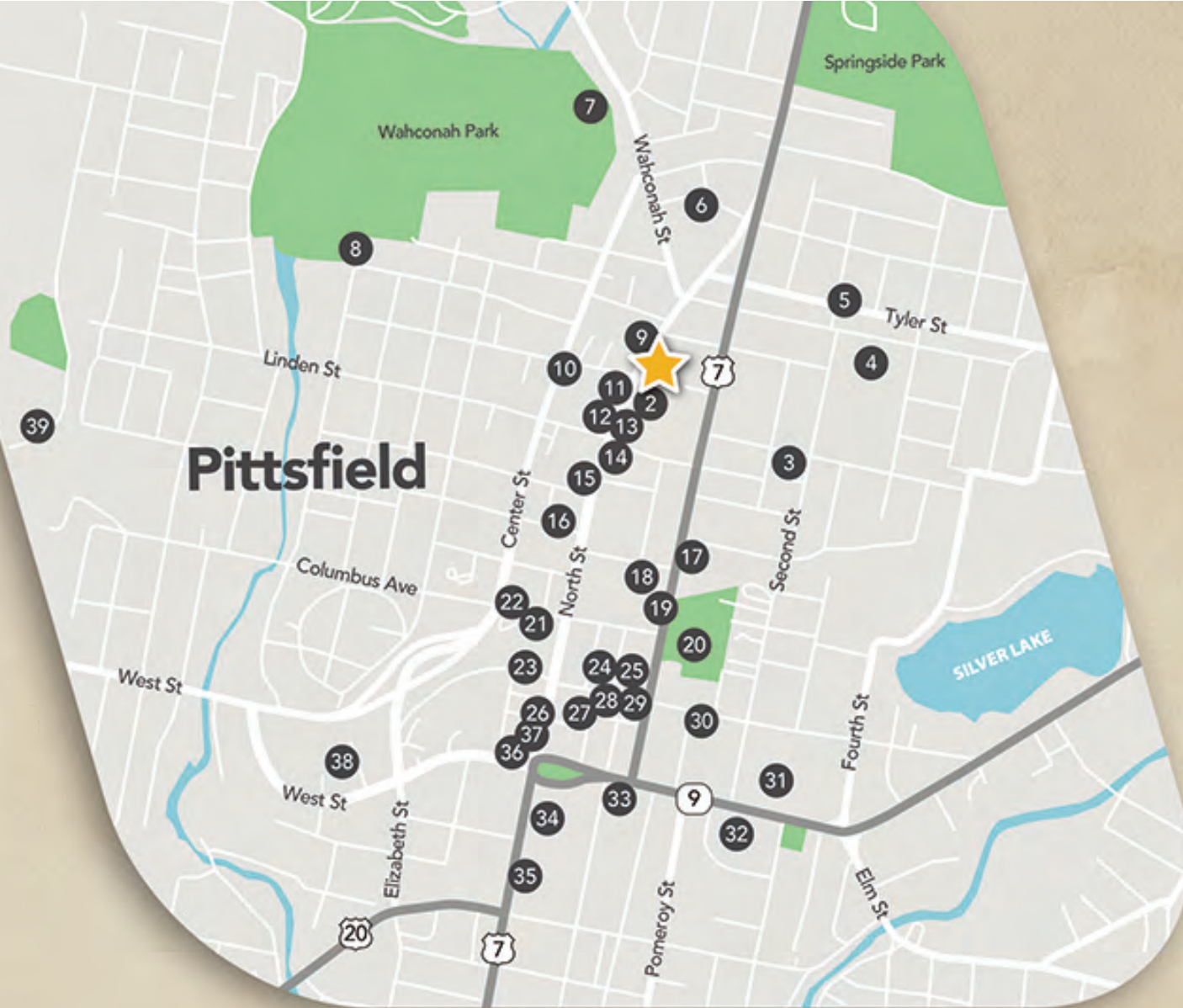


THESE APARTMENTS WILL FILL QUICKLY
APPLY TODAY!



All applications will be handled according to a Fair Housing and Marketing Plan approved by the State of Massachusetts.





- ★ Terrace 592
- 2 A-Mart Food Mart
- 3 Tot Spot Daycare
- 4 Morningside Community School
- 5 Dairy Cone
- 6 Berkshire Medical Center
- 7 Wahconah Park
- 8 Dorothy Bak Playground
- 9 Family Dollar
- 10 Madison Cafe
- 11 Carr Hardware
- 12 Walgreens
- 13 510 North St Bus Stop
- 14 Dottie's Coffee Lounge
- 15 Pittsfield Health Food Centre
- 16 Boyd-Quinson Theater:
Barrington Stage Company
- 17 Cumberland Farms
- 18 Sofra Turkish Mediterranean Grill
- 19 RJ's Restaurant
- 20 The Common Park
- 21 Pittsfield Train Station
- 22 Pittsfield Fire Department -
Headquarters
- 23 Tito's Mexican Bar & Grill
- 24 Lichtenstein Center for the Arts
- 25 Hearthway Inc. Office
- 26 The Marketplace Cafe
- 27 Pittsfield Police Department
- 28 City of Pittsfield City Hall
- 29 Highland Restaurant
- 30 United States Post Office
- 31 Massachusetts Registry
of Motor Vehicles
- 32 Pittsfield High School
- 33 Berkshire Athenaeum,
Pittsfield's Public Library
- 34 Berkshire Museum
- 35 Colonial Theatre
- 36 District Kitchen
- 37 Phoenix Theatres Beacon Cinema
- 38 Big Y World Class Supermarket
- 39 Conte Community Elementary



592 North Street
Pittsfield, MA 01201